

REVISION DATA		
REV	DESCRIPTION	DATE
A0	NEW DRAWING	2015-11-23

### Specification

Material:  
 Contact Material: Brass  
 Contact plating: Au or Sn Over30-50u" Ni  
 Insulator Material: Black Polyester UL94V-0  
 Standard: PA6T/PA9T/LCP+30%G.F

Electrical:  
 Current rating: 2.0Amps/contact max.  
 Contact resistance:  $\leq 20m\Omega$ /contact  
 Insulation resistance:  $\geq 1000M\Omega$  at  $V=100V$   
 Withstanding Voltage: 500V AC/minute

Mechanical:  
 Operating temperature:  $-40^{\circ}C$  to  $+105^{\circ}C$   
 Reflow soldering temperature:  $260 \pm 5^{\circ}C, 10s$

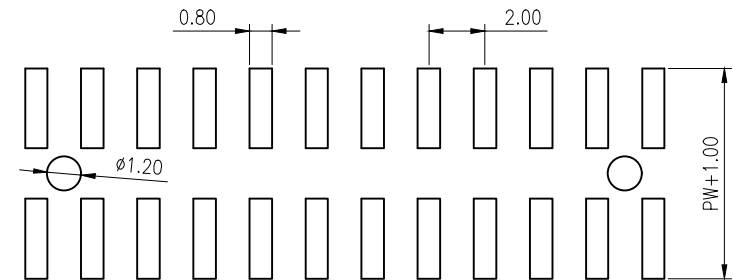
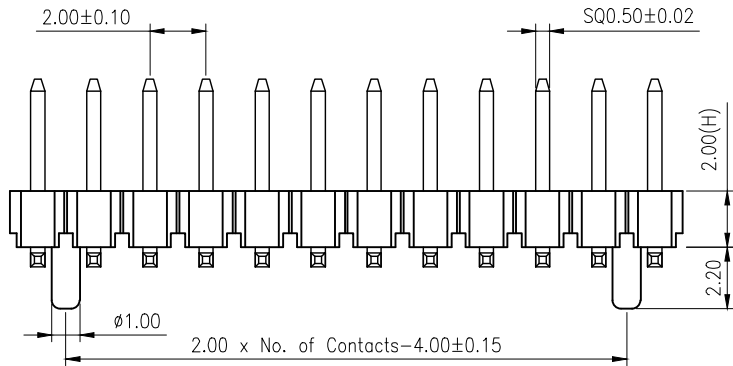
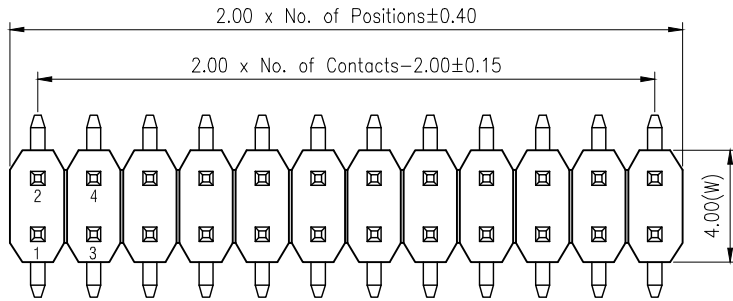
PROJECT	PA (mm)	PB (mm)	PW(mm)
Standard	4.00	0	6.50
Specified			

P.C.B LAYOUT

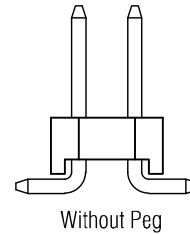
PD03	2XX1	S	XX	X	B	N	X	SXXX
Product Descriptions PD03 H2.0 W4.0	No. of Positions 02-40P	Angle Type S SMT Type	Contact Plated SN Tin120u" MT 雾锡120u" GF Gold 0.8u" G1 Au1u" G3 Au3u" G4 Au5u" G6 Au10u" G7 Au15u" G8 Au30u" GA Au1.5u" S1 半金锡1u"	Insulator Material C PA6T E PA9T F LCP	Insulator Color B Black	Insulator Feature N Without Peg	Packing Options A PE Bag B Tray C PVC Box D Tube E Tube+CAP F Tape Reel G Reel+CAP	Series No. SXXX $L=PA+PB+H+{(PW-2.0)/2}$

<b>GSAMTEK® 东莞市广溯电子科技有限公司</b> DONGGUAN GUANG SU ELECTRONIC TECHNOLOGY CO.,LTD				
TOLERANCE	PROJECTON		TITLE: 双排SMT排针 PH2.0 H2.0 系列图	
ANGLE $\pm 5^{\circ}$	DATE :	2015-11-23	PART NO. PD032XX1SXXXBNXSXXX	
X.XXX $\pm 0.10$	DRAWN :	SAMTEK	DRAWING NO.	
X.XX $\pm 0.20$	CHECKED :		REV: A0	UNIT: mm
X.X $\pm 0.30$	APPROVED :		SCALE: 3:1	SIZE: A4
X. $\pm 0.50$				

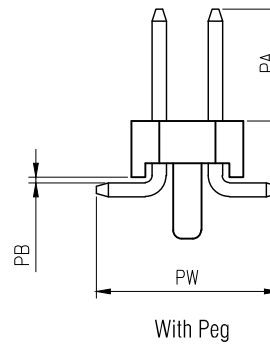
REVISION DATA		
REV	DESCRIPTION	DATE
A0	NEW DRAWING	2015-11-23



P.C.B LAYOUT



Without Peg



With Peg

## Specification

Material:

Contact Material: Brass

Contact plating: Au or Sn Over 30-50u" Ni

Insulator Material: Black Polyester UL94V-0

Standard: PA6T/PA9T/LCP + 30%G.F

Electrical:

Current rating: 2.0Amps/contact max.

Contact resistance:  $\leq 20\text{m}\Omega/\text{contact}$

Insulation resistance:  $\geq 1000\text{M}\Omega$  at  $V=100\text{V}$

Withstanding Voltage: 500V AC/minute

Mechanical:

Operating temperature:  $-40^{\circ}\text{C}$  to  $+105^{\circ}\text{C}$

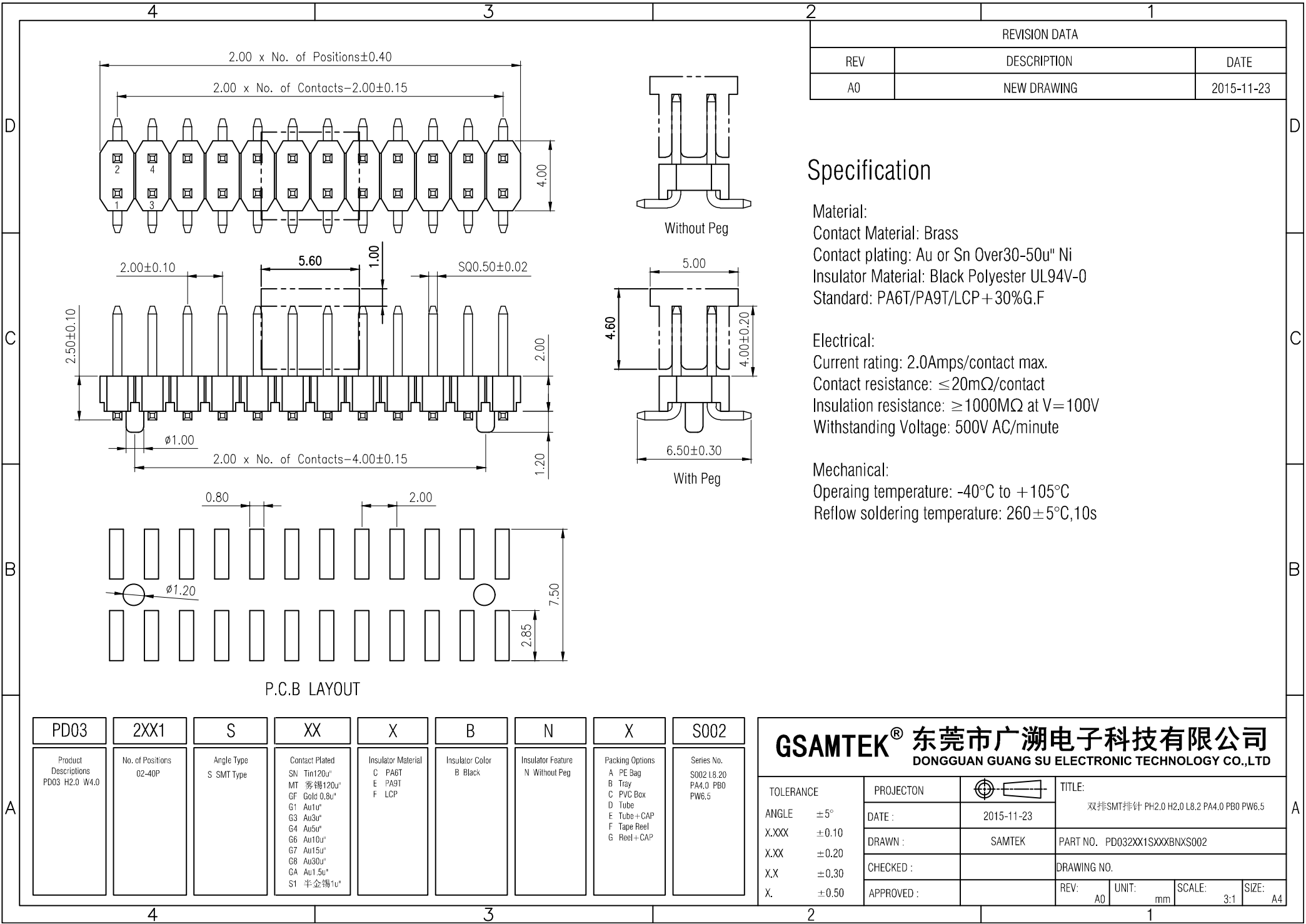
Reflow soldering temperature:  $260 \pm 5^{\circ}\text{C}, 10\text{s}$

PROJECT	PA (mm)	PB (mm)	PW (mm)
Standard	4.00	0	6.50
Specified			

PD03	2XX1	S	XX	X	B	N	X	SXXX
Product Descriptions PD03 H2.0 W4.0	No. of Positions 02-40P	Angle Type S SMT Type	Contact Plated SN Tin120u" MT 雾锡120u" GF Gold 0.8u" G1 Au1u" G3 Au3u" G4 Au5u" G6 Au10u" G7 Au15u" G8 Au30u" GA Au1.5u" S1 半金锡1u"	Insulator Material C PA6T E PA9T F LCP	Insulator Color B Black	Insulator Feature N Without Peg	Packing Options A PE Bag B Tray C PVC Box D Tube E Tube+CAP F Tape Reel G Reel+CAP	Series No. SXXX L=PA+PB+H+ (PW-2.0)/2

**GSAMTEK® 东莞市广溯电子科技有限公司**  
DONGGUAN GUANG SU ELECTRONIC TECHNOLOGY CO.,LTD

TOLERANCE	PROJECTON	TITLE:
ANGLE $\pm 5^{\circ}$	DATE: 2015-11-23	双排SMT排针 PH2.0 H2.0 系列图
X.XXX $\pm 0.10$	DRAWN: SAMTEK	PART NO. PD032XX1SXXXBNXSXXX
X.XX $\pm 0.20$	CHECKED:	DRAWING NO.
X.X $\pm 0.30$	APPROVED:	REV: A0 UNIT: mm SCALE: 3:1 SIZE: A4
X. $\pm 0.50$		



REVISION DATA		
REV	DESCRIPTION	DATE
A0	NEW DRAWING	2015-11-23

### Specification

Material:  
 Contact Material: Brass  
 Contact plating: Au or Sn Over30-50u" Ni  
 Insulator Material: Black Polyester UL94V-0  
 Standard: PA6T/PA9T/LCP+30%G.F

Electrical:  
 Current rating: 2.0Amps/contact max.  
 Contact resistance: ≤ 20mΩ/contact  
 Insulation resistance: ≥ 1000MΩ at V=100V  
 Withstanding Voltage: 500V AC/minute

Mechanical:  
 Operating temperature: -40°C to +105°C  
 Reflow soldering temperature: 260±5°C,10s

PD03	2XX1	S	XX	X	B	N	X	S002
Product Descriptions PD03 H2.0 W4.0	No. of Positions 02-40P	Angle Type S SMT Type	Contact Plated SN Tin120u" MT 雾锡120u" GF Gold 0.8u" G1 Au1u" G3 Au3u" G4 Au5u" G6 Au10u" G7 Au15u" G8 Au30u" GA Au1.5u" S1 半金锡1u"	Insulator Material C PA6T E PA9T F LCP	Insulator Color B Black	Insulator Feature N Without Peg	Packing Options A PE Bag B Tray C PVC Box D Tube E Tube+CAP F Tape Reel G Reel+CAP	Series No. S002 L8.20 PA4.0 PB0 PW6.5

<b>GSAMTEK® 东莞市广溯电子科技有限公司</b> DONGGUAN GUANG SU ELECTRONIC TECHNOLOGY CO.,LTD		TITLE: 双排SMT排针 PH2.0 H2.0 L8.2 PA4.0 PB0 PW6.5	
TOLERANCE	PROJECTON	DATE: 2015-11-23	
ANGLE ±5°	DATE:	DRAWN: SAMTEK	
X.XXX ±0.10	CHECKED:	PART NO. PD032XX1SXXXBNXS002	
X.XX ±0.20	APPROVED:	DRAWING NO.	
X.X ±0.30	REV: A0	UNIT: mm	SCALE: 3:1
X. ±0.50			SIZE: A4